

# Structive Engineering And Consultancy Services

**Project Monitoring & Control | Design  
services | 3D/2D Detailing services |  
Joist/Deck Detailing services**

**Associated With**





# About US

## Who we are

Structive Engineering is a collection of leaders and professionals in Civil / Structural / Mechanical engineering fields from Material handling Industry, Petrochemical Industry etc. who are dedicated and creating the most innovative solutions for our clients. We serve engineering solution to the Indian, USA client and the other world.

## Our strength

Structive Engineering has its own internal protocol for QAQC & Quality management system, which encourages team for a systematic approach towards its work execution. Our commitment to satisfy our customer needs by offering quality services at right time in totality at a price which ensures our competitiveness is attained.

Our employees are our asset. our team of professional detailers & checkers are developed through continuous investment in training offered in latest technology resulting in upgraded skill and knowledge of the employees.

**"Don't find fault, find a remedy; anybody can complain." ~ Henry Ford**

# Why we different?

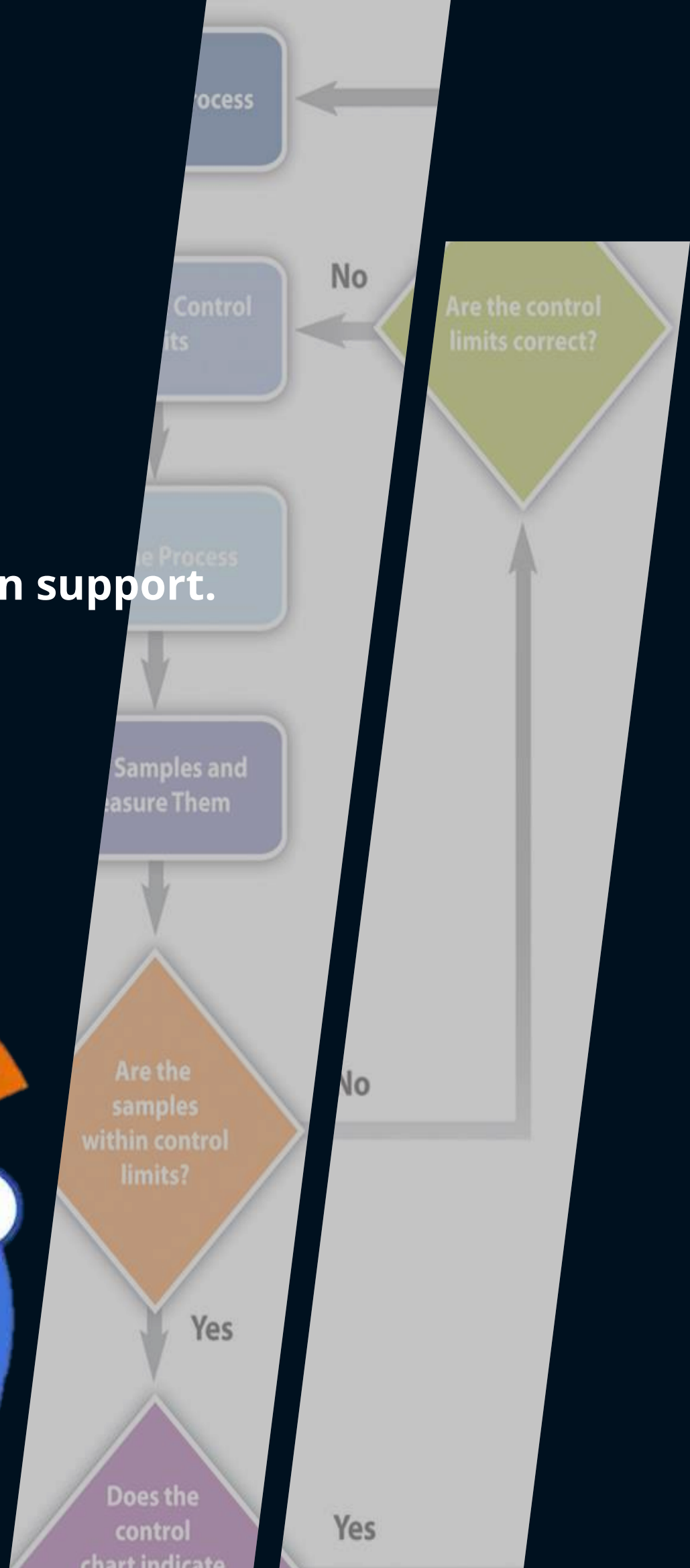
---

- Core Management from Design & Construction domain.
- Strong knowledge base about Project Management Control with Primavera.
- Competitive & Flexible pricing model depending on Client's demand.
- Tested and Proven Customer engagement model.
- Client centric delivery mode – onsite, offshore, hybrid, centre-in-centre.
- Amalgamation of experience and youth.
- Tested and proven in-house training Model-working as force multiplier.
- Engineers with vast experience in Steel Structural work.

# We Serve

## Project Monitoring & Control Services

- ✓ Project controls execution support.
- ✓ Reporting
- ✓ Analysis and Tracking
- ✓ Risk assessment.
- ✓ Change Management
- ✓ Studies.





# We Serve

## Structural Design Services

- ✓ Conceptual Engineering
- ✓ Structural Planning
- ✓ Member Design
- ✓ Load Analysis
- ✓ Action of forces & Compilation of Loads

## 3D Modeling / GAD & Detailing Services

- ✓ GAD preparation
- ✓ 3D Modelling with connections
- ✓ Export model for SP3D and other BIM applications.
- ✓ Shop Drawings
- ✓ Erection Drawings
- ✓ Drawing Log & Transmittals
- ✓ Part Drawings/ Attached material details
- ✓ Embeds/anchors details and placement drawings in co-ordination with concrete trades
- ✓ Customized NC Files
- ✓ DXF files for plate work
- ✓ Import files for BIM Model, Rivet Model
- ✓ AutoCAD drawings/ dxf File

[www.structive.in](http://www.structive.in)



# We Serve

## USA Joist & Deck Detailing Services

Our Joist and Deck Detailing Services consist of preparing complete and accurate drawings & Bill of materials as per client requirement based on Contract Drawings. The service includes

- ✓ Erection plans & sections - details for the proper and safe installation of the steel joist girders, open web steel joist, bridging, steel deck, and accessories.
- ✓ B.O.M. – A complete bill of material of Joists & Decks for fabrication.

# Project Monitoring & Control Services

## **PROJECT CONTROLS EXECUTION SUPPORT:**

implement/execute the cost and schedule management program for assigned project(s).

- ❖ Software systems and packages including Primavera P6. Ability to work within a high-performance, cross-functional organization with extremely tight timelines and aggressive goals.
- ❖ Generating critical milestones for the construction stage.
- ❖ Provides regular briefing to project manager on project financials, schedule status, issues, and concerns.
- ❖ Measure and control cost, schedule, and technical performance against task or project plans.
- ❖ Minimize the variance in costs and schedule from what was originally planned.

## **ANALYSIS AND TRACKING :**

- ❖ Manage project cost and schedule through Earned Value Management System (EVMS)
- ❖ Process revenue projections, forecasts, and procurement plans.
- ❖ Updating Schedule and Determining results showing remedies over it.
- ❖ Identification of real and typical categories and causes of delays.
- ❖ Critical or noncritical Delay analysis.
- ❖ Excusable or non excusable delay analysis.



# Project Monitoring & Control Services

## **RISK ASSESSMENT :**

Work with key stakeholders to identify project risks, and lead the cost and schedule contingency management process for assigned projects.

- ❖ Anticipate complex internal and external project control issues with impact on the organization.
- ❖ Determine, manage, and mitigate any program risks.
- ❖ Developing a risk management plan.

## **REPORTING :**

Develop dashboards to communicate cost and schedule performance to teams in real time. Implement a standardized suite of cost and schedule reports that enable senior management to make data driven decisions.

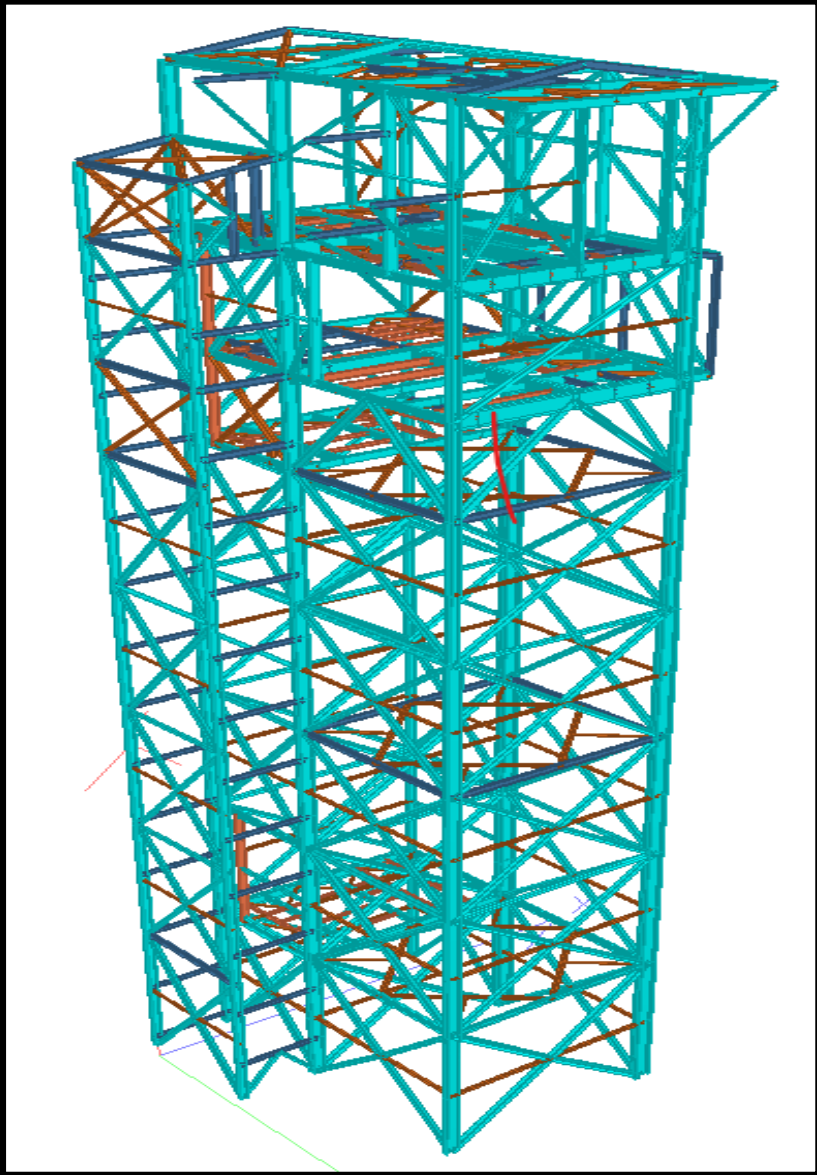
- ❖ Preparing monthly analyses and reports on expenditures, progress, commitments, budget performance and schedule performance.
- ❖ Reports profit and loss figures, as required.
- ❖ To ensure the accurate resource demand for all project departments and Groups, and to prepare necessary resource demand reports and Metrics.
- ❖ Collaborate closely with project delivery teams both client and internal to integrate all time, cost and quality information.



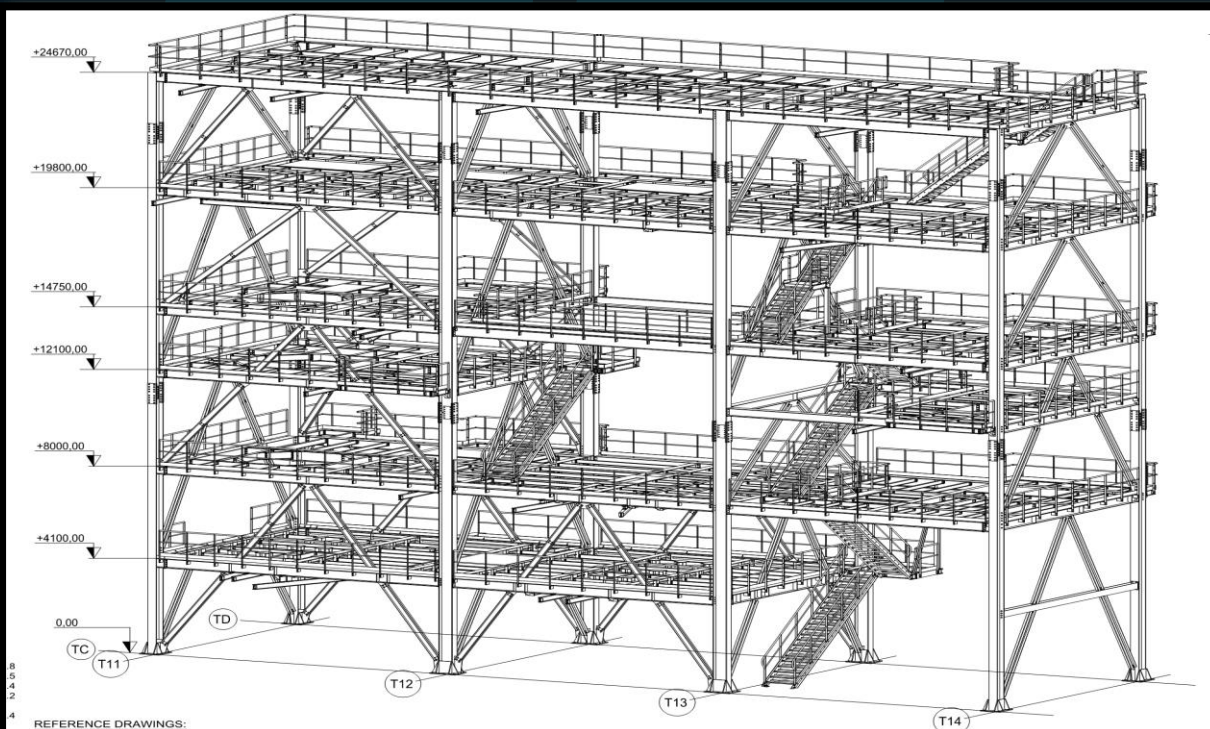
# Structural Design Services

## Example works

### MATERIAL HANDLING INDUSTRY



Junction House is a very important part of Material Handling system where one or more conveyors releases and receives materials. This sample junction house was a complex one since many conveyors have been placed here with different support conditions (Fixed, Pinned and roller). This structure has been analyzed after receiving all possible equipment loads and belt tensions from client and designed based on the provisions of relevant Indian standards

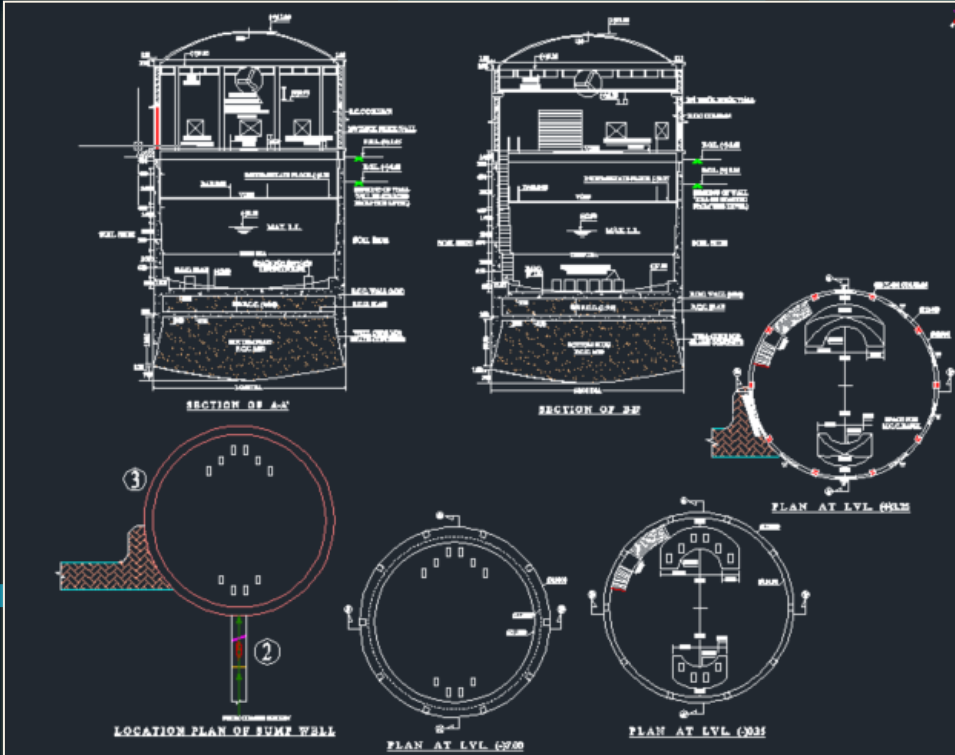


### MATERIAL HANDLING TECHNICAL STRUCTURE

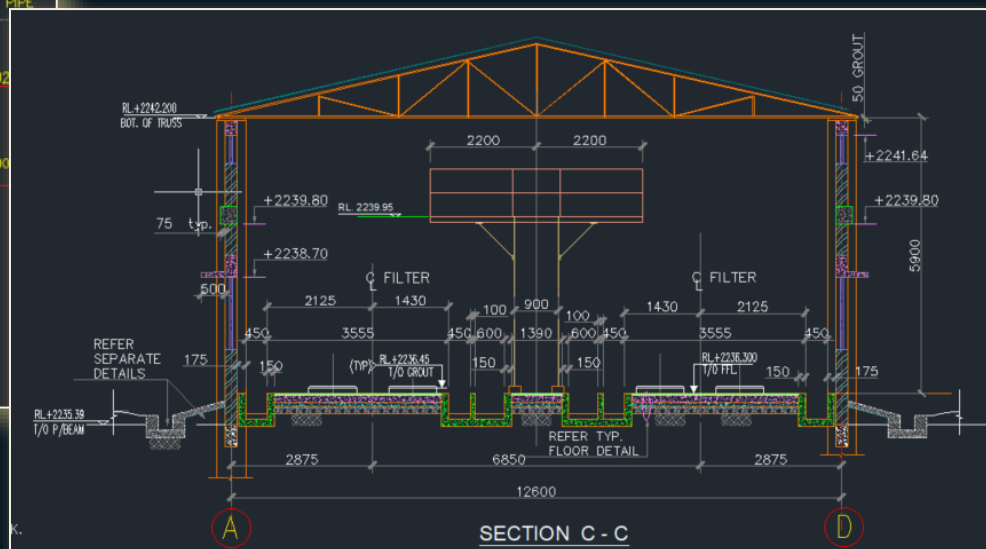
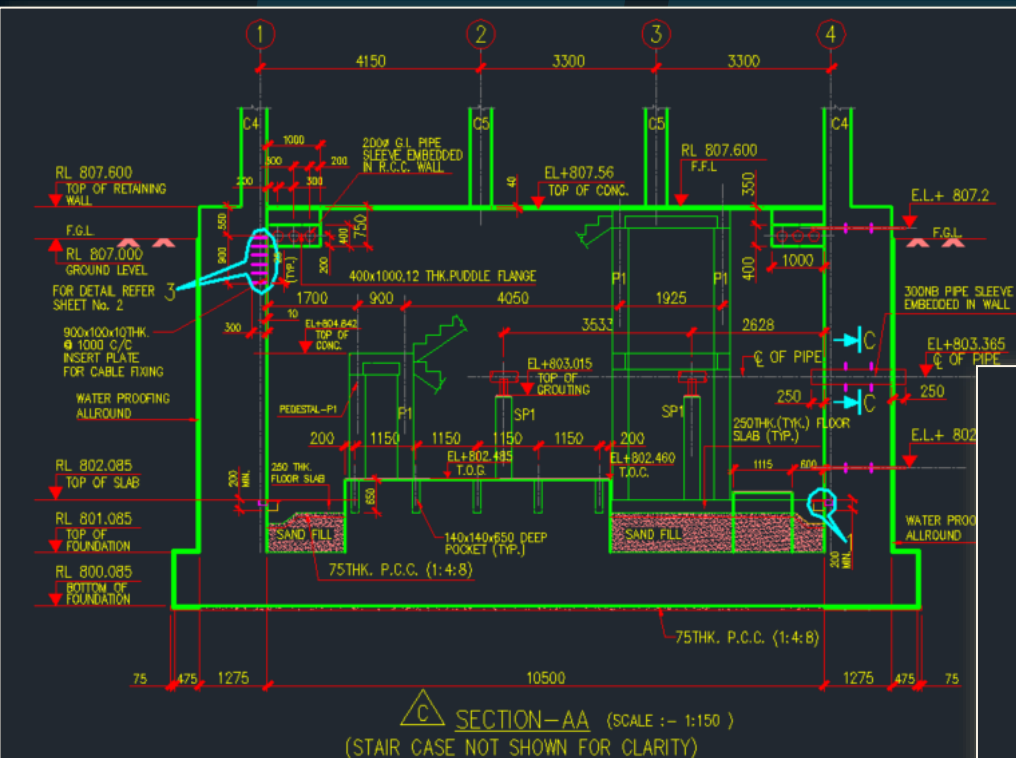
# Structural Design Services

## Example works

### SPECIAL STRUCTURAL WORK



- Sump Well: Our sump well designs incorporate the latest engineering principles and technological advancements. We ensure that our systems are robust, durable, and capable of handling varying water loads, providing long-term reliability and peace of mind.
- Intake Pump House: At **Structive Engineering**, we specialize in the design of intake pump house pits that ensure efficient and reliable water intake for a variety of applications.



### Filter cum Booster Pump House



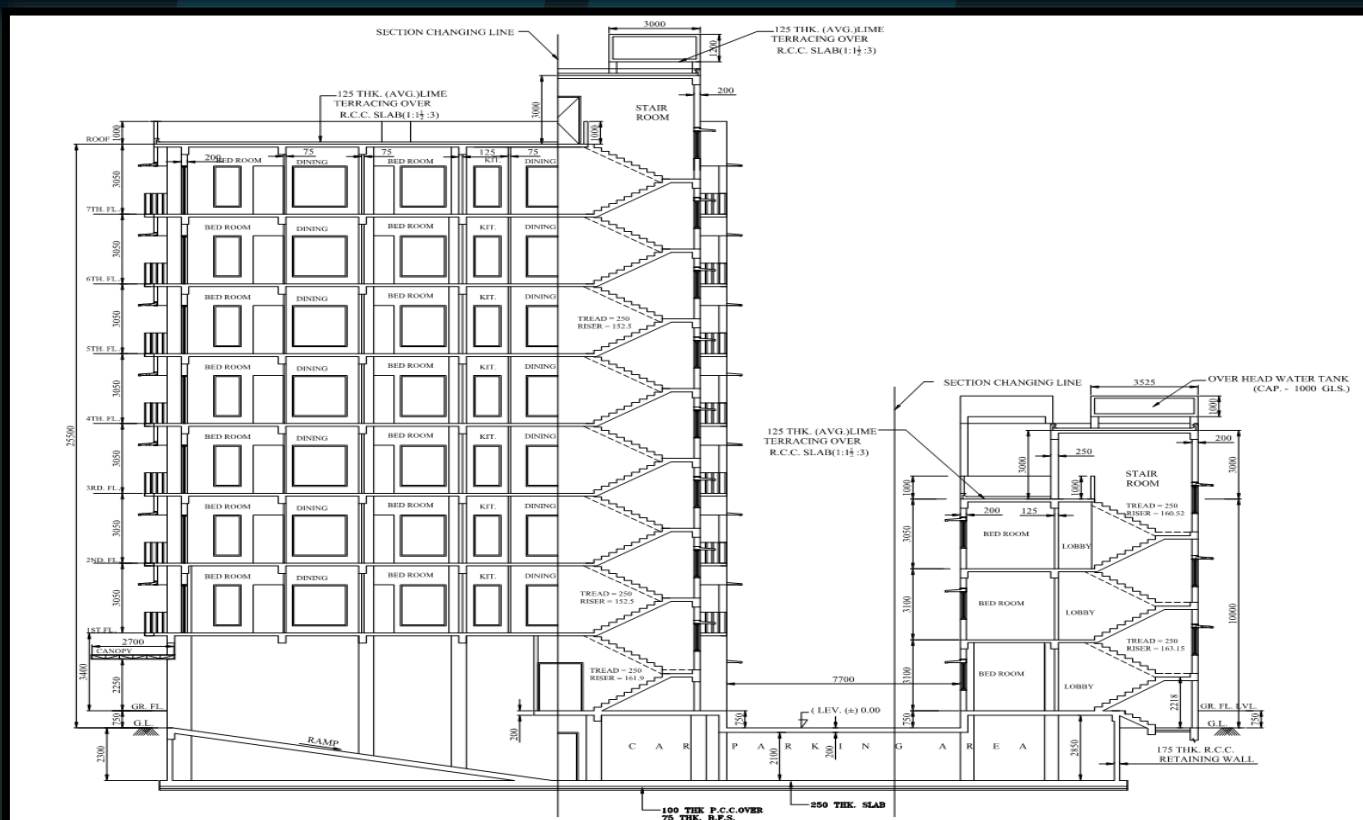
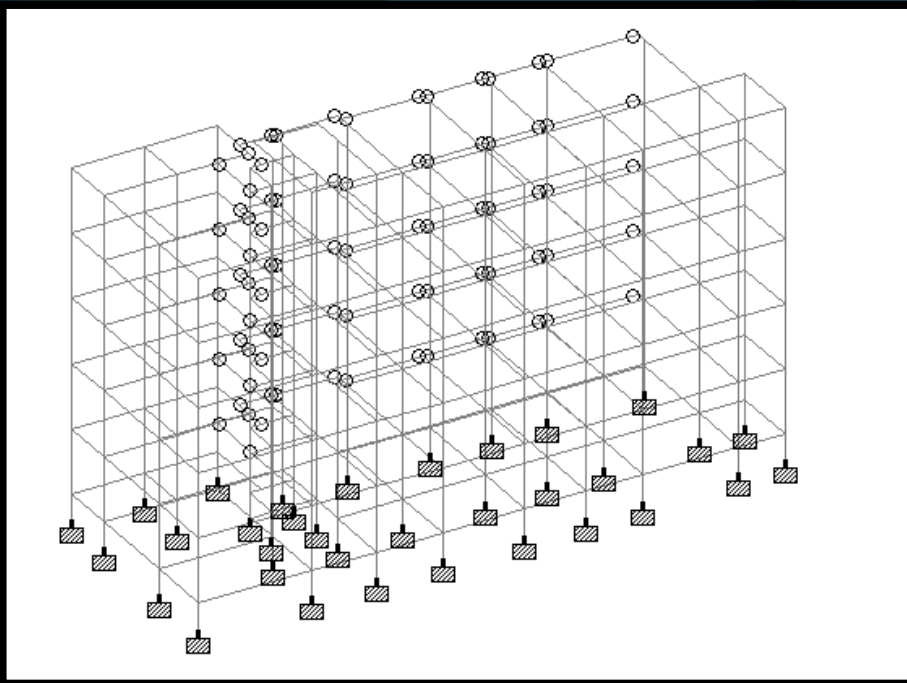
# Structural Design Services

## Example works

### METAL/RESIDENTIAL BUILDING

Once the architectural proposal plan is ready and form of the structure is ensured by client and us, all the required information is received, the structural design process starts. Structural design is an art and science of understanding the behaviour of structural members subjected to loads and designing them with economy and elegance to give a safe, serviceable and durable structure.

We complete many projects, such as building structures, parking structures, industrial process structures, long-span structures and water retaining structures. etc.



# Structural Design Services

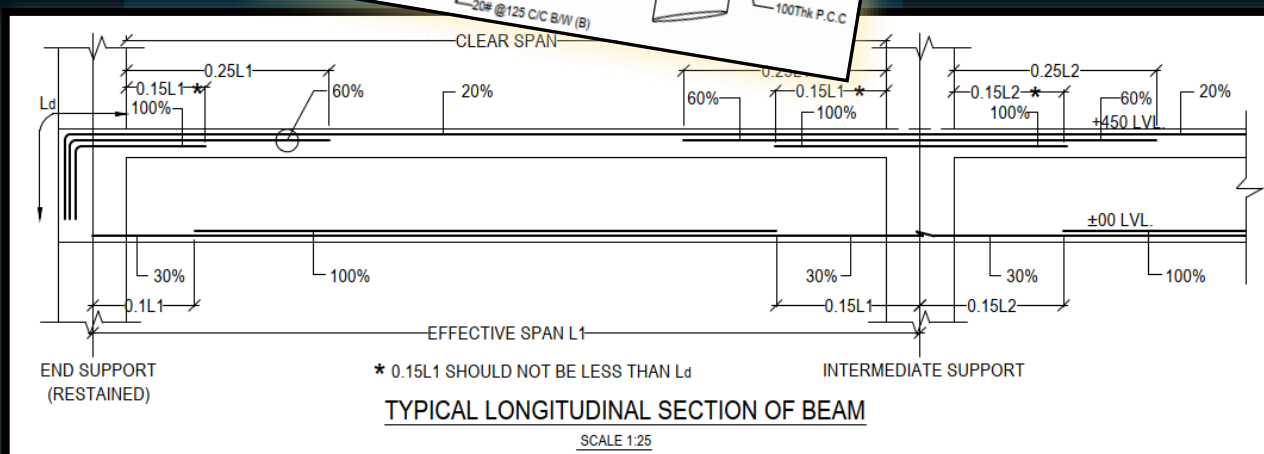
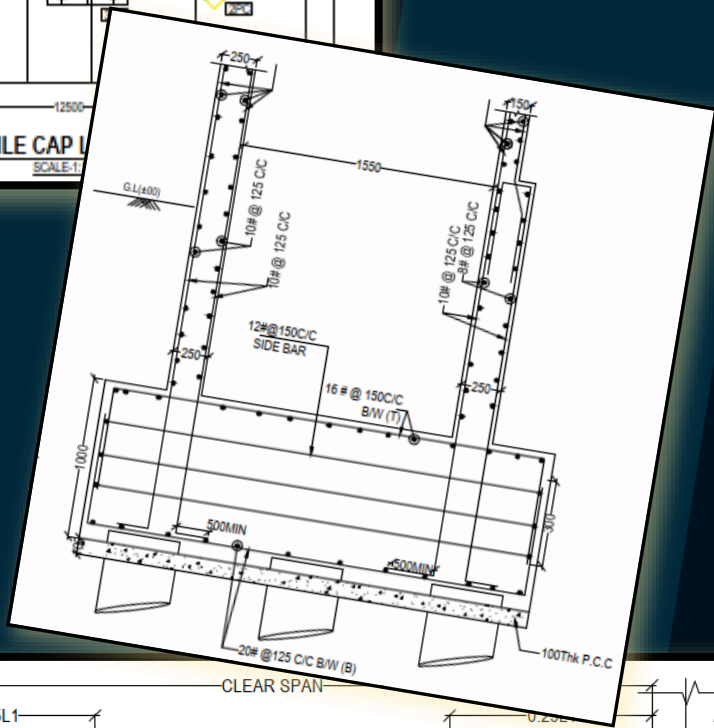
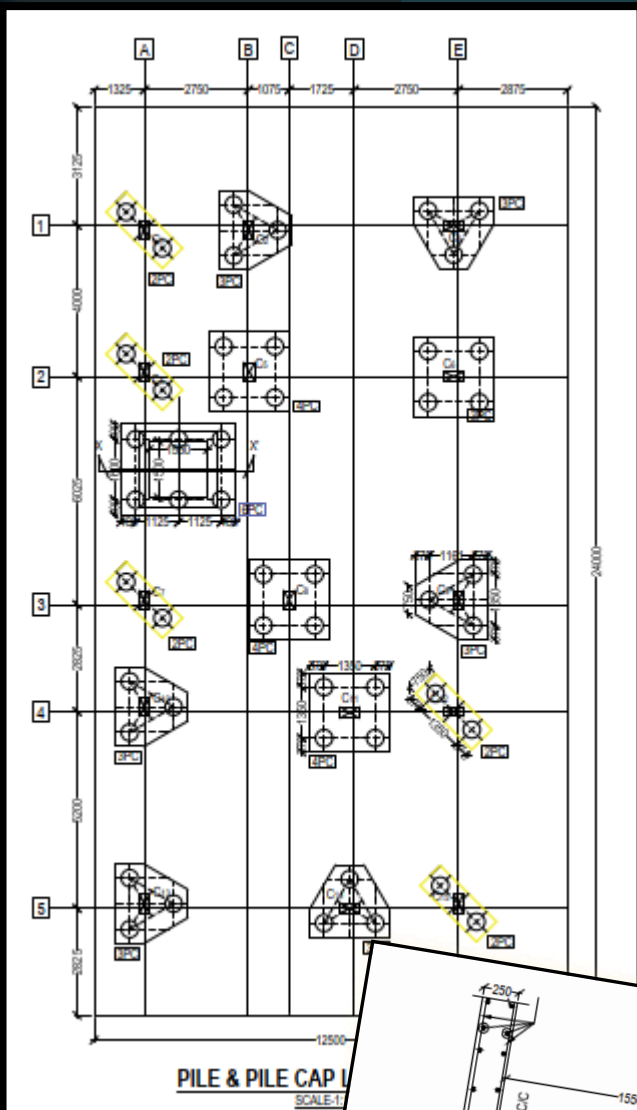
## Example works

### RESIDENTIAL BUILDING

At **Structive Engineering**, we specialize in the structural design of residential buildings, blending innovation with engineering excellence. Our designs ensure robust, safe, and aesthetically pleasing structures that stand the test of time.

Our team collaborates closely with clients to create structures that meet specific needs, combining functionality with architectural vision.

From concept to completion, our collaborative project management ensures a smooth and efficient design process. We work closely with architects, contractors, and clients to ensure that every aspect of the structure aligns with the project's goals.





# 3D Modeling / Detailing Services

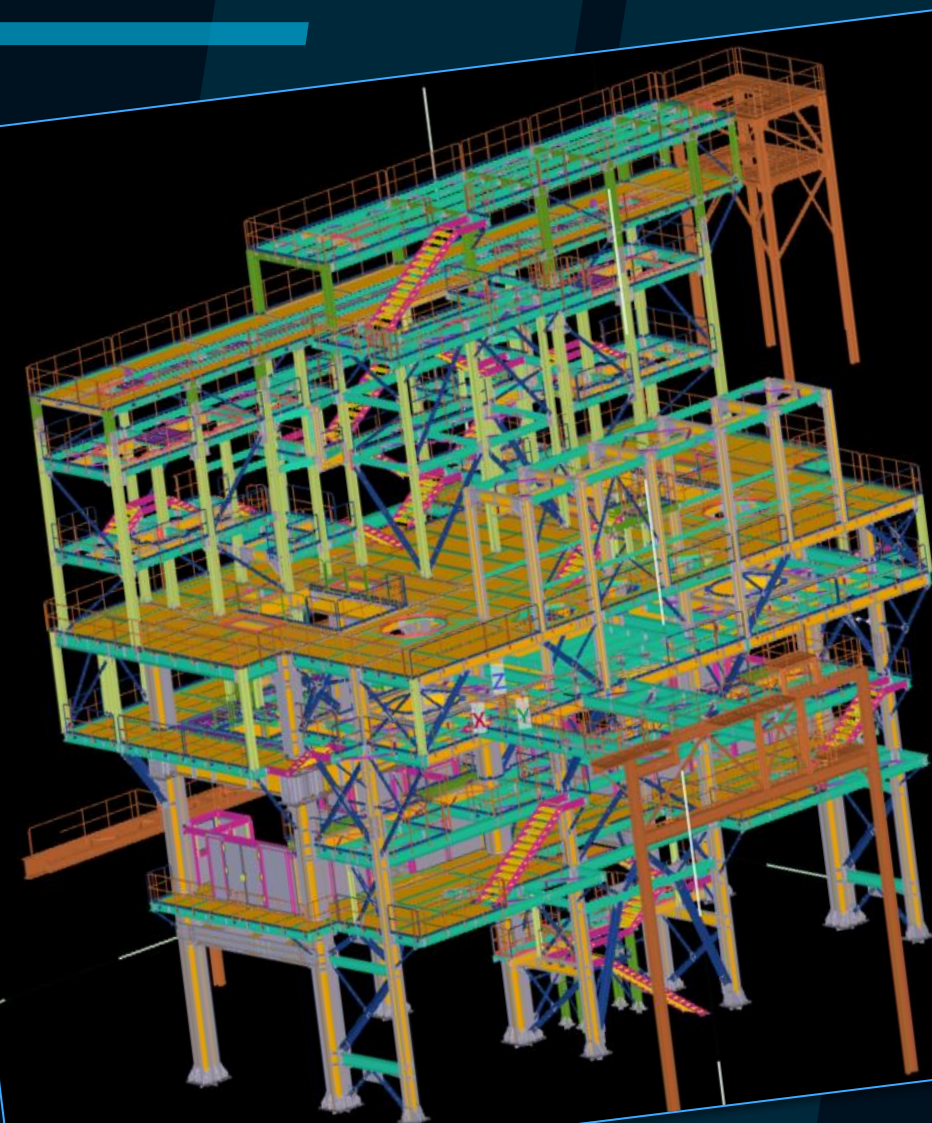
## Software we use



## Associate With

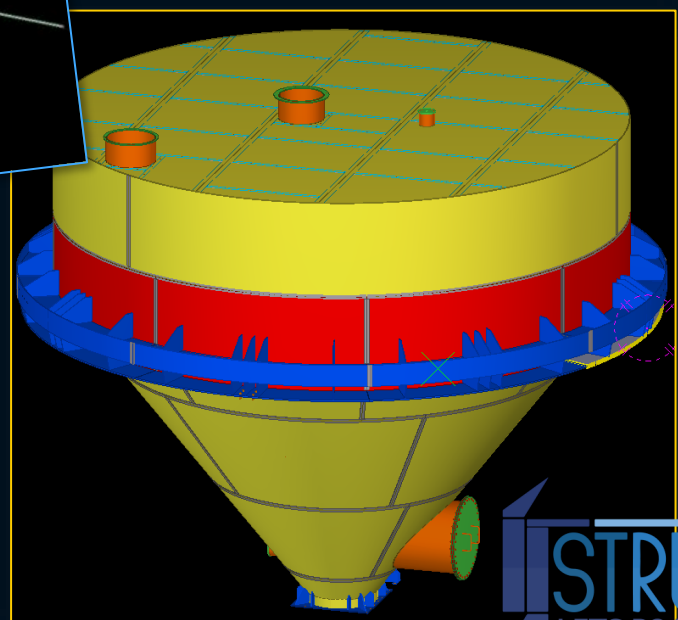
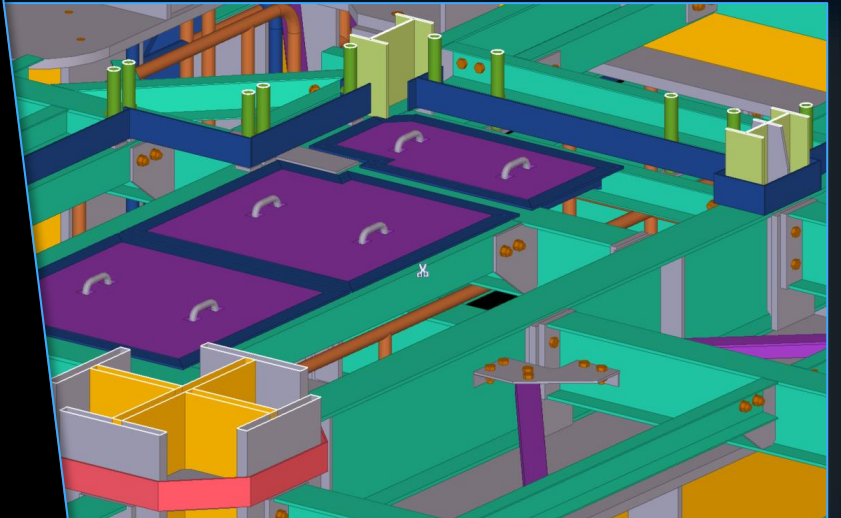


## Example works



MATERIAL HANDLING SYSTEM  
SILO

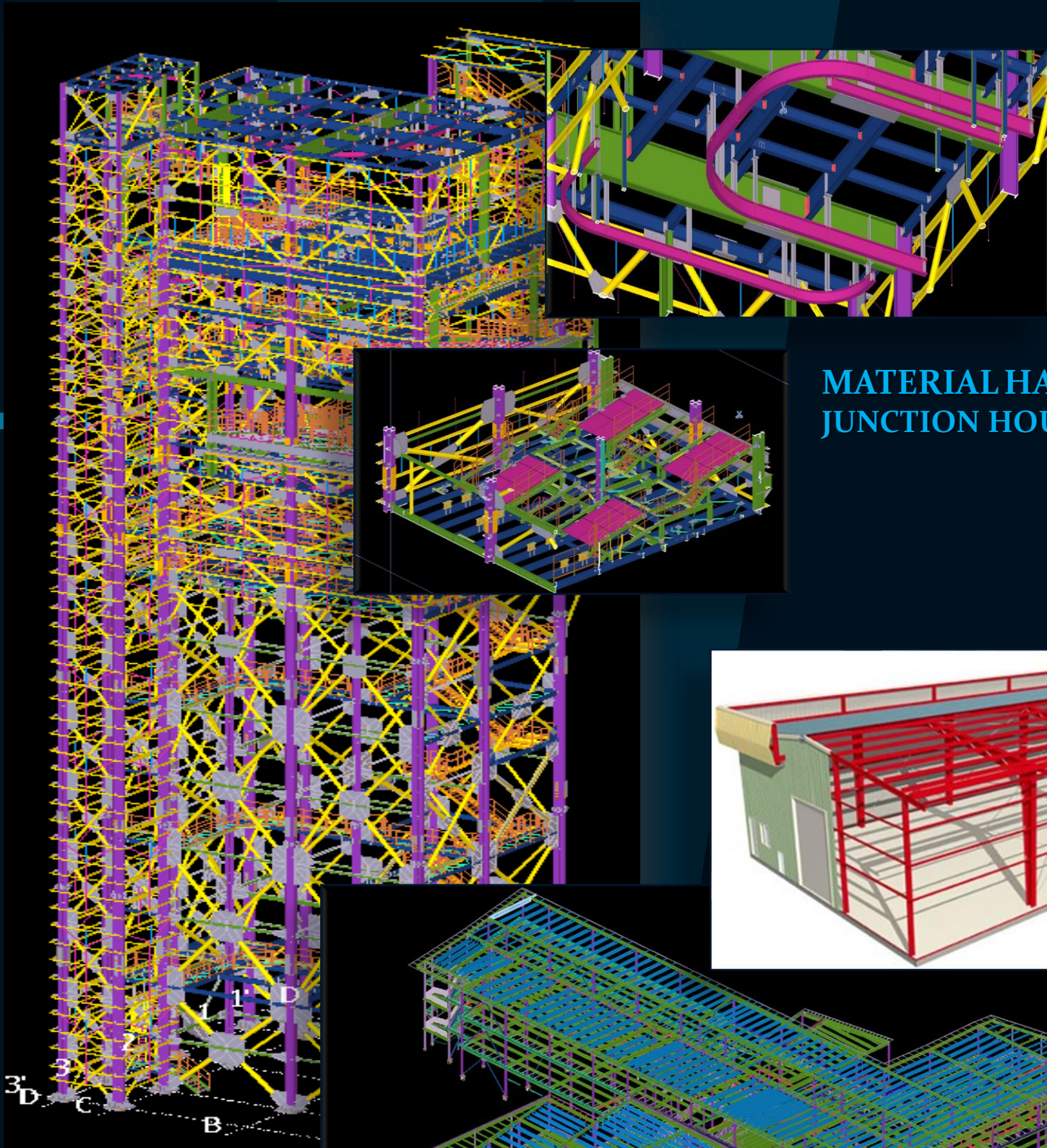
### TECHNICAL STRUCTURE



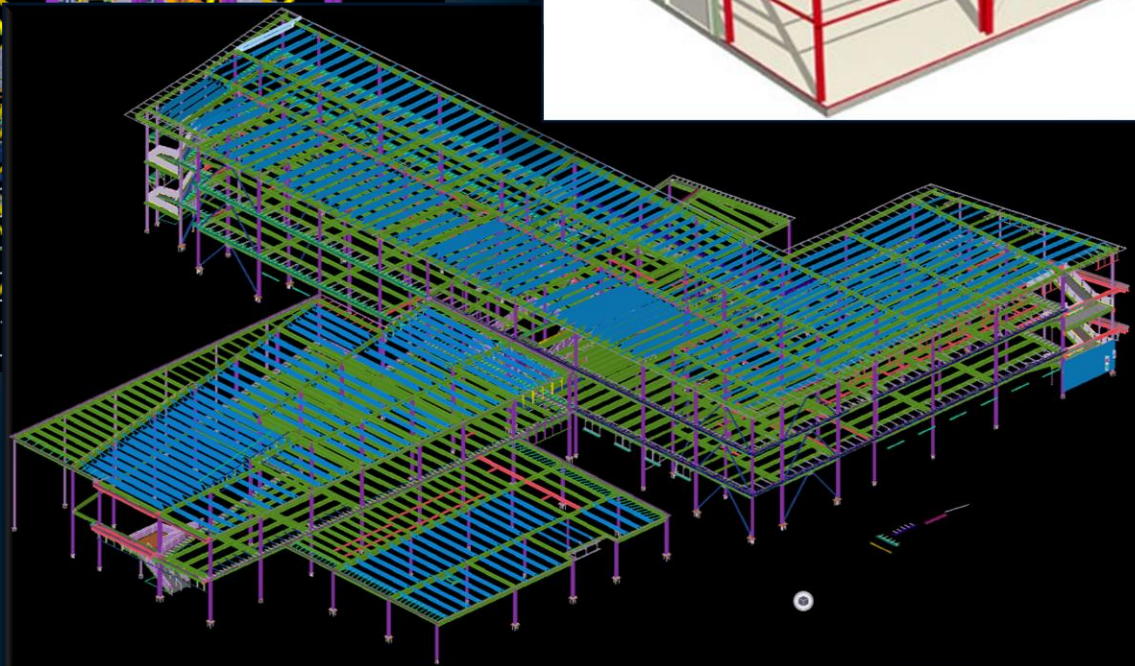


# 3D Modeling / Detailing Services

## Example works



MATERIAL HANDLING SYSTEM  
JUNCTION HOUSE

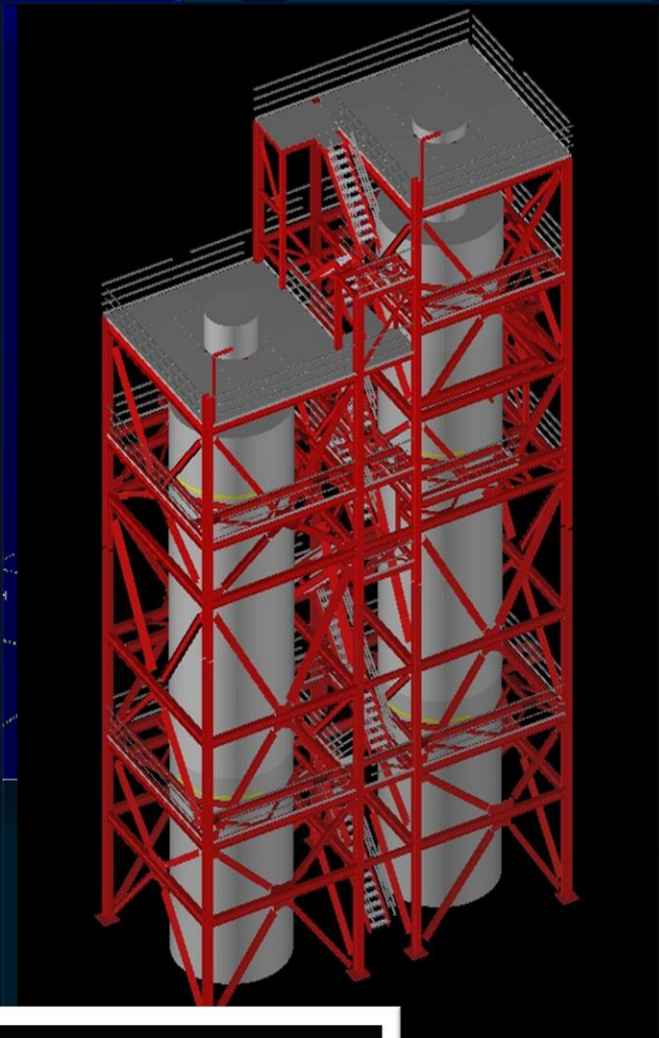
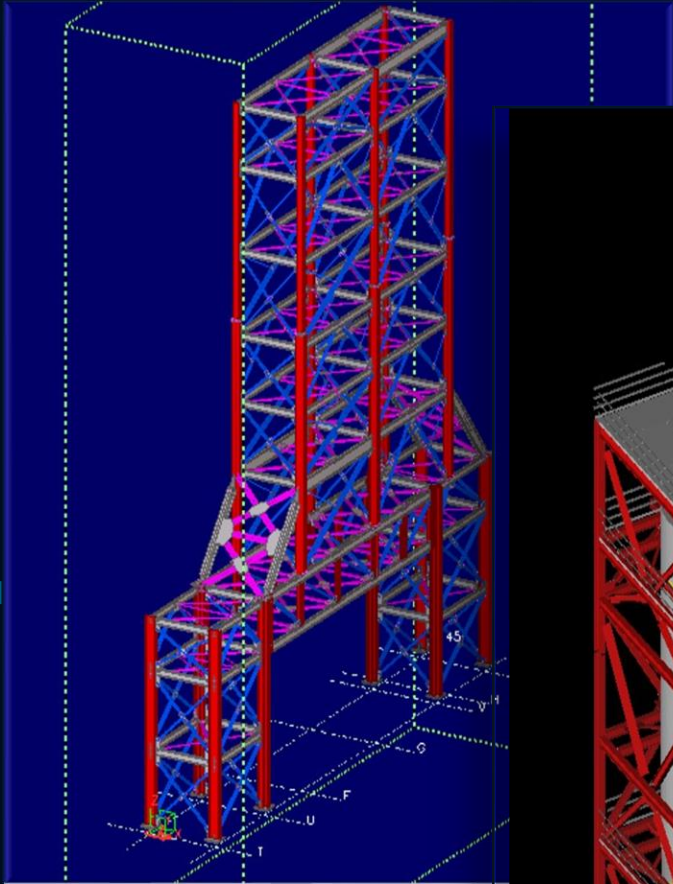


COMMERTIAL BUILDING (USA)

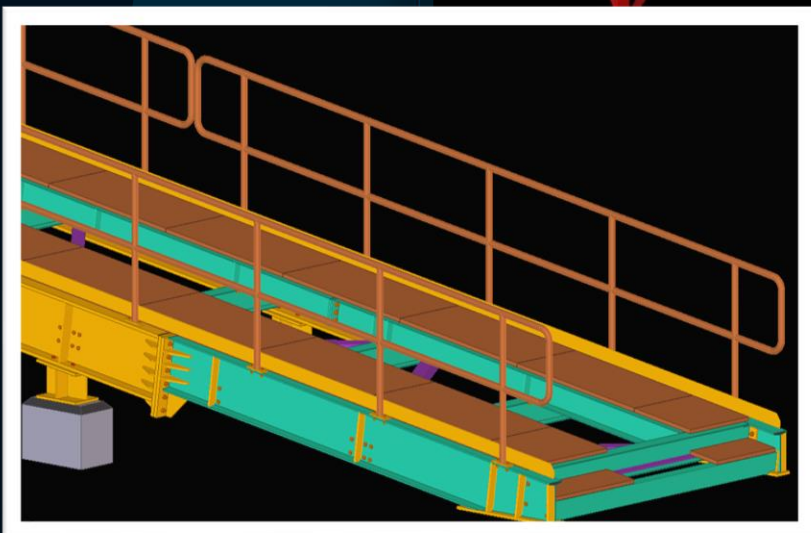
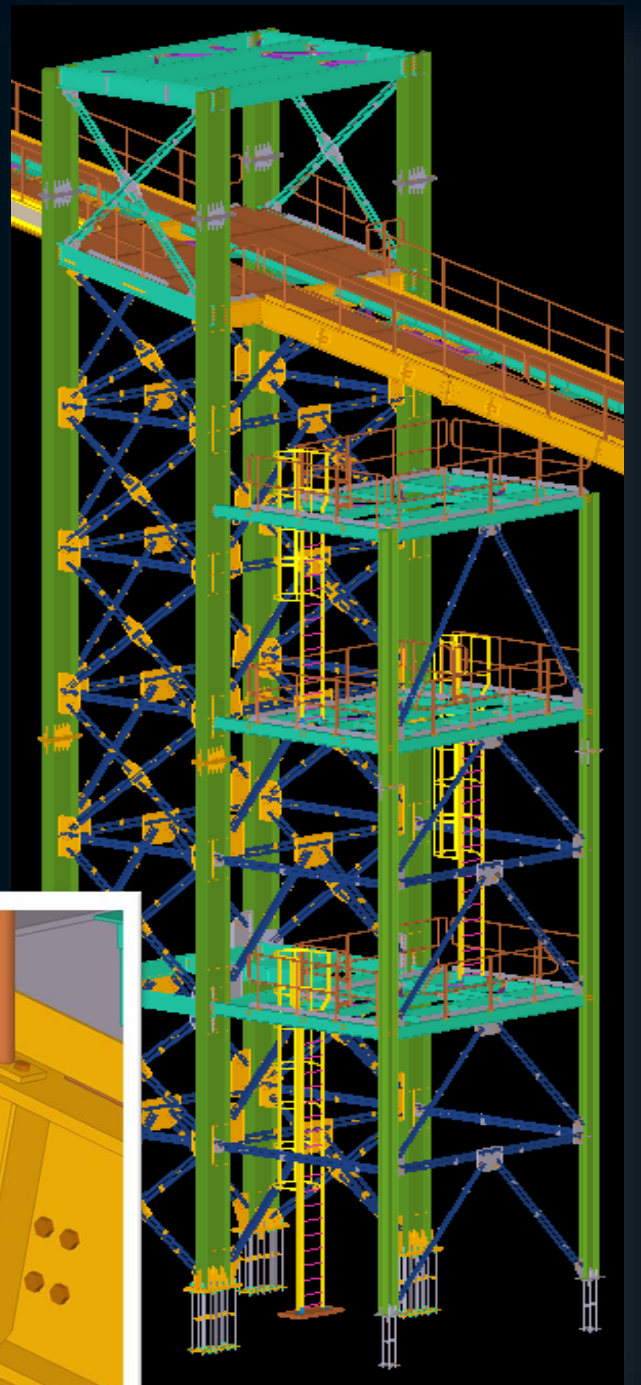


# 3D Modeling / Detailing Services

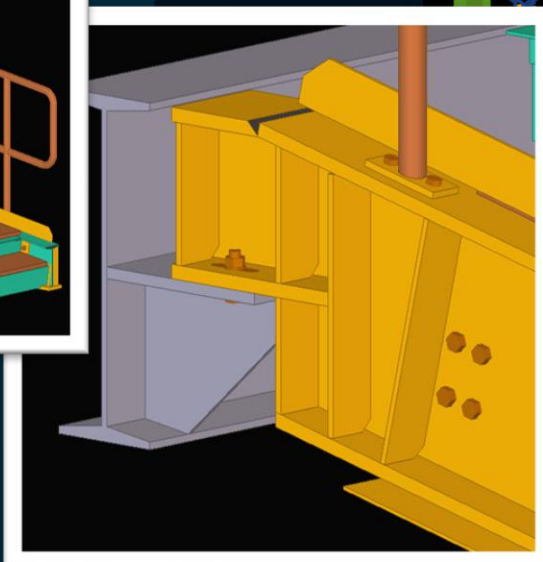
## Example works



OIL & GAS  
DUCT SUPPORT SYSTEM



MATERIAL HANDLING SYSTEM  
CONVEYOR



# USA Joist & Deck Detailing Services

## Steel detailing applications

- AIRPORT TERMINALS
- MUSEUMS
- SPORT ARENA - GYMNASIUMS
- DEFENCE PROJECTS
- SCHOOLS – COLLEGES TRAINING CENTER
- CASINOS – THERAPY CENTERS – SHOPS
- HOSPITALS – HELTHCARE – MEDICAL FECILITIES
- COMMERCIAL BUILDINGS – SHOPPING COMPLEX - WAREHOUSES

## Key Benefits

- SIMPLIFIED DRAWING
- ACCOURATE DETAILING
- ACCOURATE BOM
- PROPER COMMUNICATION
- ACCURATE & ON TIME RFI PREPARATION



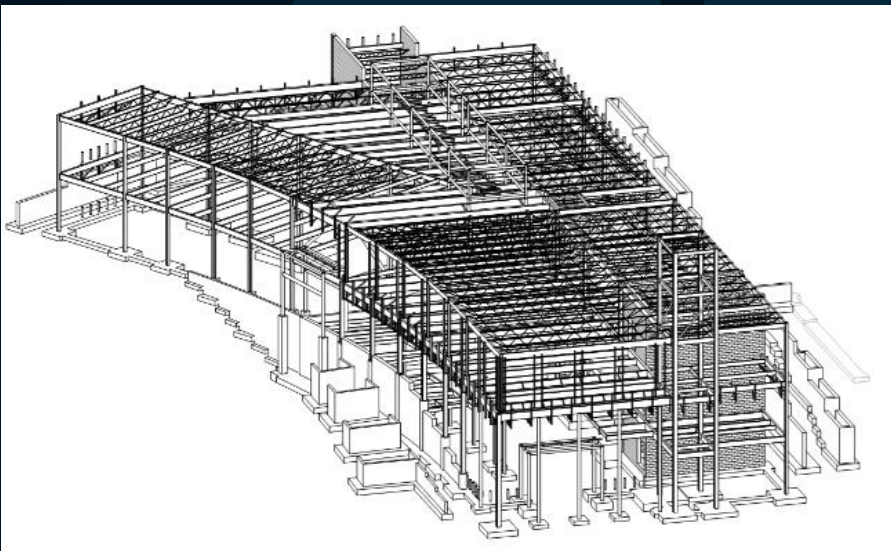
# USA Joist & Deck Detailing Services

## Software we use



AUTODESK®

## Example works



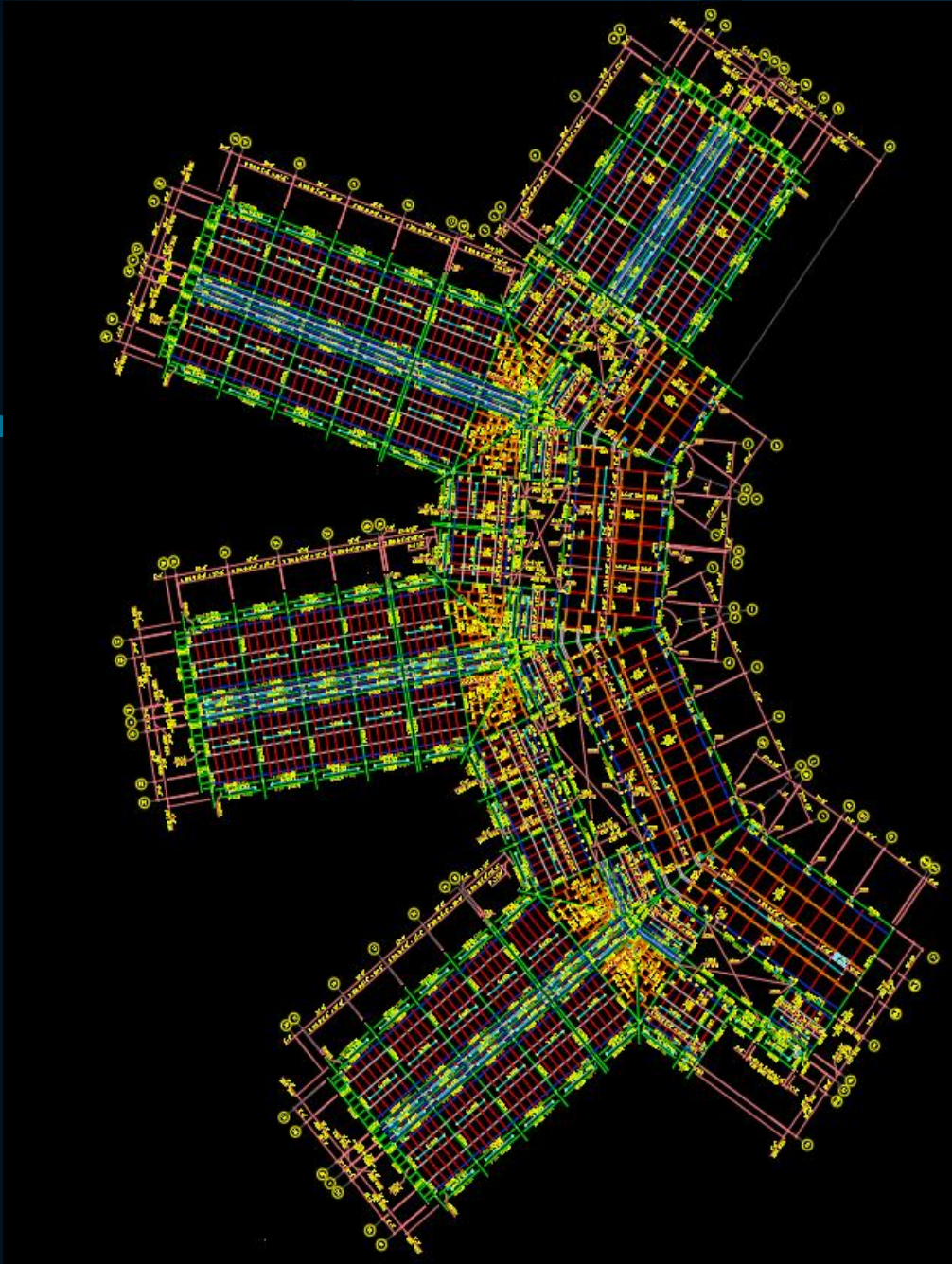
CHAPEL HILL CARRBORO SCHOOLS



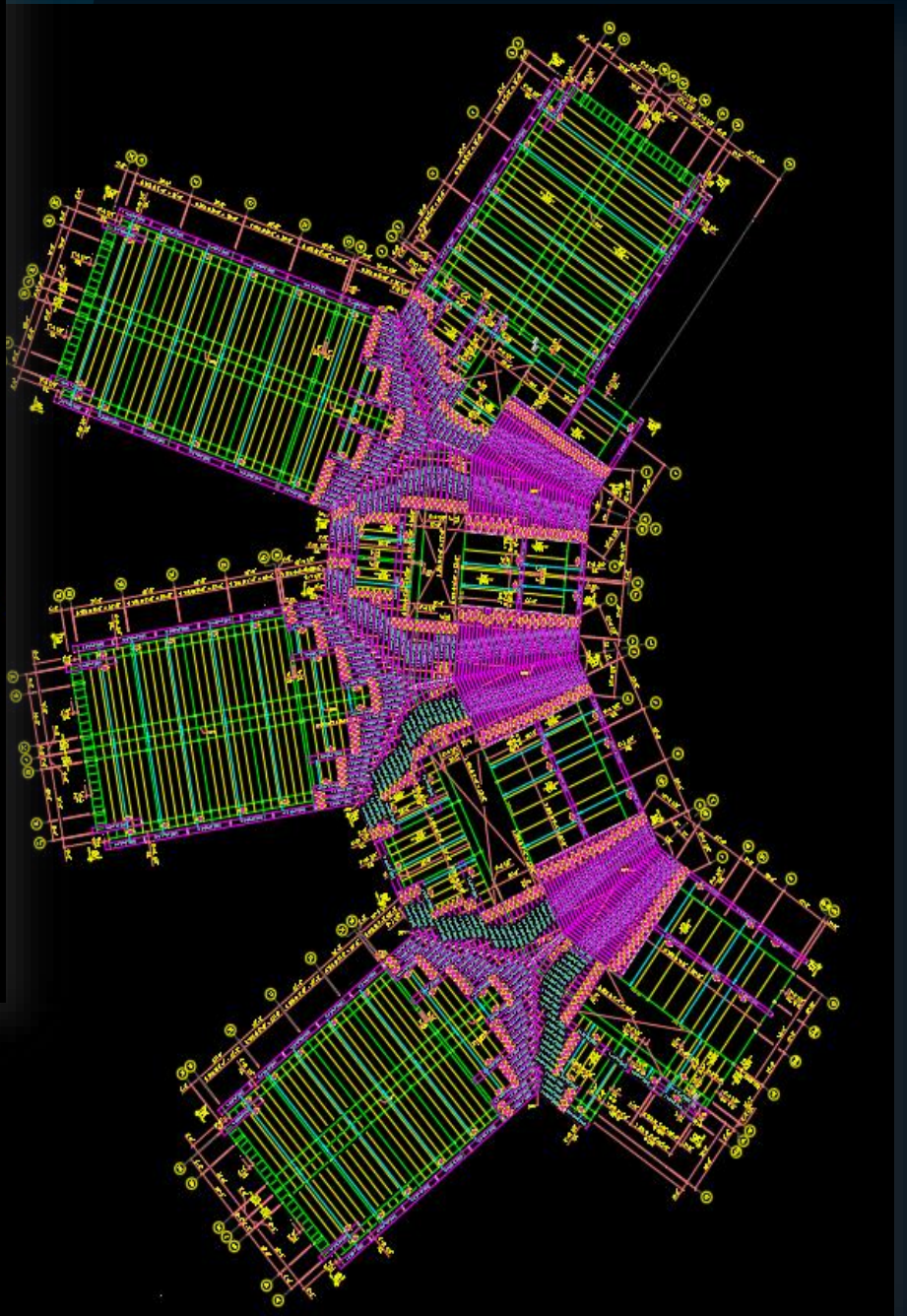


# USA Joist & Deck Detailing Services

## Example works



Layout drawing



CHATHAM GROVE ELEMENTARY  
SCHOOL



# Our Mission

It's important to describe what the team is trying to achieve. Being mission focused helps teams eliminate distractions and concentrate on delivering results aligned with their core objectives.

Structive Engineering identifies a strong mission as:

- Conveying a compelling picture of the future.
- Appeals to all those with a stake in the mission.
- Is clear enough to guide decision making.
- Determination to serve better work, sacrifices, transparent with customers, loyalty & commitment .

# Our Vision

Our vision is to be widely recognized within the community for our continuing commitment to customer service and client satisfaction.

# Contact us

**Reg. Office:** Flat 5B, Block-2, Sonar Tori Complex, Hatihara, Sulanguri, Kolkata-700157

**Corporate Office:** 2<sup>nd</sup> Floor, EE-4, EE Block, Bidhannagar, SaltLake, Sector-2, Pin:700091

Mob: +91 9830450826

Email: [info@structive.in](mailto:info@structive.in)

[www.structive.in](http://www.structive.in)

